

UN720W-i55

SPEC TABLE

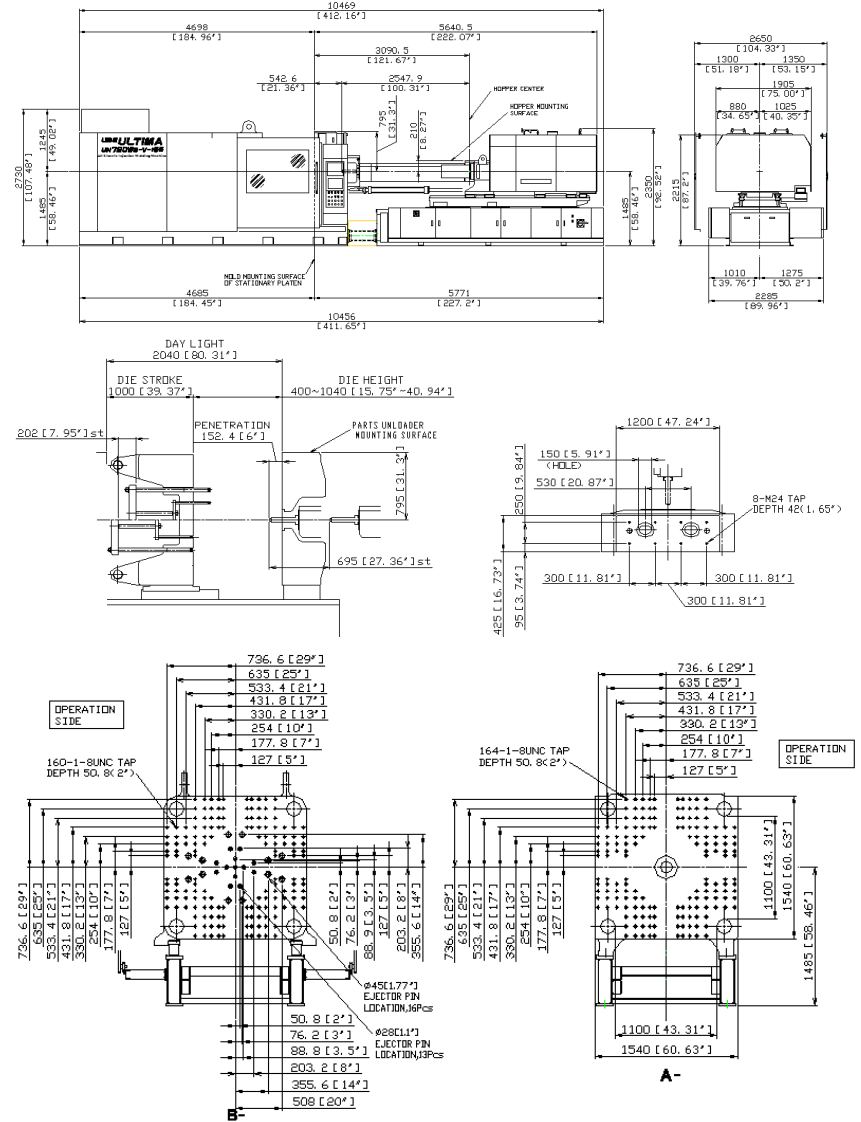
ITEM		UNIT	UN720W	
CLAMP UNIT	CLAMPING FORCE	kN (UStf)	6,370 (716)	
	CLEARANCE BETWEEN TIE BARS (HxV)	mm (inch)	1,100 × 1,100 (43.31 × 43.31)	
	PLATEN SIZE (HxV)	mm (inch)	1,540 × 1,540 (60.63 × 60.63)	
	CLAMP STROKE	mm (inch)	1,000 (39.37)	
	MOLD HEIGHT (MIN/MAX)	mm (inch)	400 / 1,040 (15.75 / 40.94)	
	MAX DAYLIGHT	mm (inch)	2,040 (80.31)	
	EJECTOR STROKE	mm (inch)	200 (7.87)	
	EJECTOR FORCE	kN (UStf)	196 (22.03)	
INJECTION UNIT	CAPACITY	T·m	i55	
	SCREW TYPE	—	A	B
	SCREW DIAMETER	mm (inch)	90 (3.54)	100 (3.93)
	THEORETICAL INJECTION VOLUME	cm ³ (cu.inch)	2,863 (180.81)	3,534 (215.66)
	INJ. SHOT MASS (PS)	g (oz)	2,634 (92.91)	3,252 (114.71)
	MAX INJECTION PRESSURE	MPa (psi)	190 (27,557)	155 (22,480)
	MAX HOLD PRESSURE	MPa (psi)	170 (24,656)	140 (20,305)
	INJECTION RATE	cm ³ /s (cu.inch/s)	1,018 (62.12)	1,257 (76.71)
	SCREW SPEED	min ⁻¹	165	
	PLASTICIZING CAPACITY (PS)	kg/h (lbs/h)	445 (981)	462 (1,018)

Remarks:

1. Injection weight, injection rate and plasticizing capacity are dependent upon molding conditions and resin used.
2. The value of plasticizing capacity is derived from UBE standard testing conditions.
3. Specifications and data in this brochure are for reference only. Actual specification/performance may vary due to numerous factors such as continuous performance improvements, manufacturing allowable tolerance variations, etc.
4. Please consult with us when using materials like PC, PMMA, POM, or PPO that require high screw torque for plasticizing.
5. Standard machine specifications are subject to change due to option.

UN720W-i55

MACHINE APPEARANCE



DIMENSION FOR MOLD

UN950W-i74

SPEC TABLE

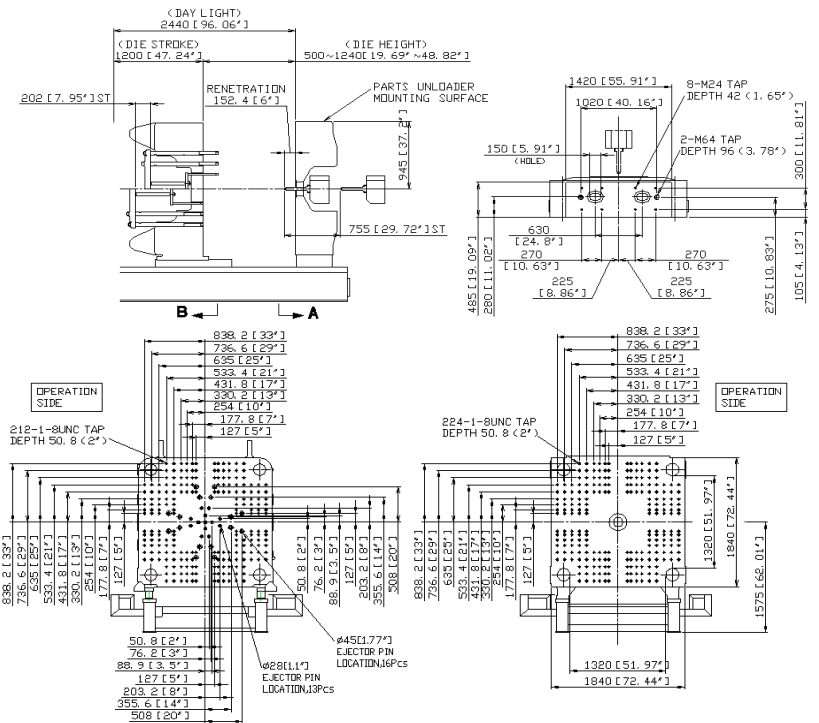
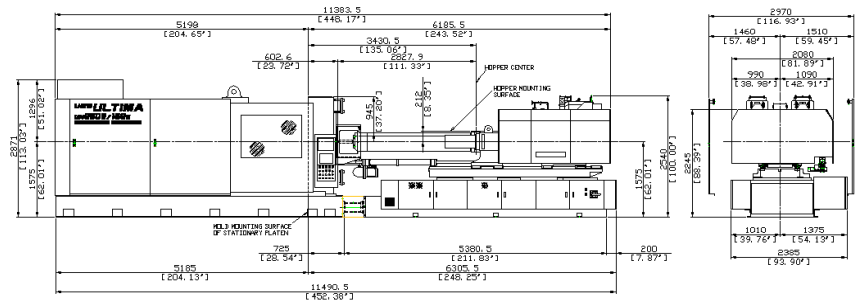
ITEM		UNIT	UN950W	
CLAMP UNIT	CLAMPING FORCE	kN (UStf)	8,330 (936)	
	CLEARANCE BETWEEN TIE BARS (HxV)	mm (inch)	1,320 × 1,320 (51.97 × 51.97)	
	PLATEN SIZE (HxV)	mm (inch)	1,840 × 1,840 (72.44 × 72.44)	
	CLAMP STROKE	mm (inch)	1,200 (47.24)	
	MOLD HEIGHT (MIN/MAX)	mm (inch)	500 / 1,240 (19.69 / 48.82)	
	MAX DAYLIGHT	mm (inch)	2,440 (96.06)	
	EJECTOR STROKE	mm (inch)	200 (7.87)	
	EJECTOR FORCE	kN (UStf)	245 (27.5)	
INJECTION UNIT	CAPACITY	T·m	i74	
	SCREW TYPE	—	A	B
	SCREW DIAMETER	mm (inch)	100 (3.93)	112 (4.41)
	THEORETICAL INJECTION VOLUME	cm ³ (cu.inch)	3,927 (239.64)	4,926 (300.60)
	INJ. SHOT MASS (PS)	g (oz)	3,613 (127.44)	4,532 (159.86)
	MAX INJECTION PRESSURE	MPa (psi)	185 (26,831)	150 (21,755)
	MAX HOLD PRESSURE	MPa (psi)	170 (24,656)	135 (19,580)
	INJECTION RATE	cm ³ /s (cu.inch/s)	1,178 (71.89)	1,477 (90.13)
	SCREW SPEED	min ⁻¹	147	
	PLASTICIZING CAPACITY (PS)	kg/h (lbs/h)	540 (1,190)	560 (1,234)

Remarks:

1. Injection weight, injection rate and plasticizing capacity are dependent upon molding conditions and resin used.
2. The value of plasticizing capacity is derived from UBE standard testing conditions.
3. Specifications and data in this brochure are for reference only. Actual specification/performance may vary due to numerous factors such as continuous performance improvements, manufacturing allowable tolerance variations, etc.
4. Please consult with us when using materials like PC, PMMA, POM, or PPO that require high screw torque for plasticizing.
5. Standard machine specifications are subject to change due to option.

UN950W-i74

MACHINE APPEARANCE



DIMENSION FOR MOLD

UN1550HW-i128

SPEC TABLE

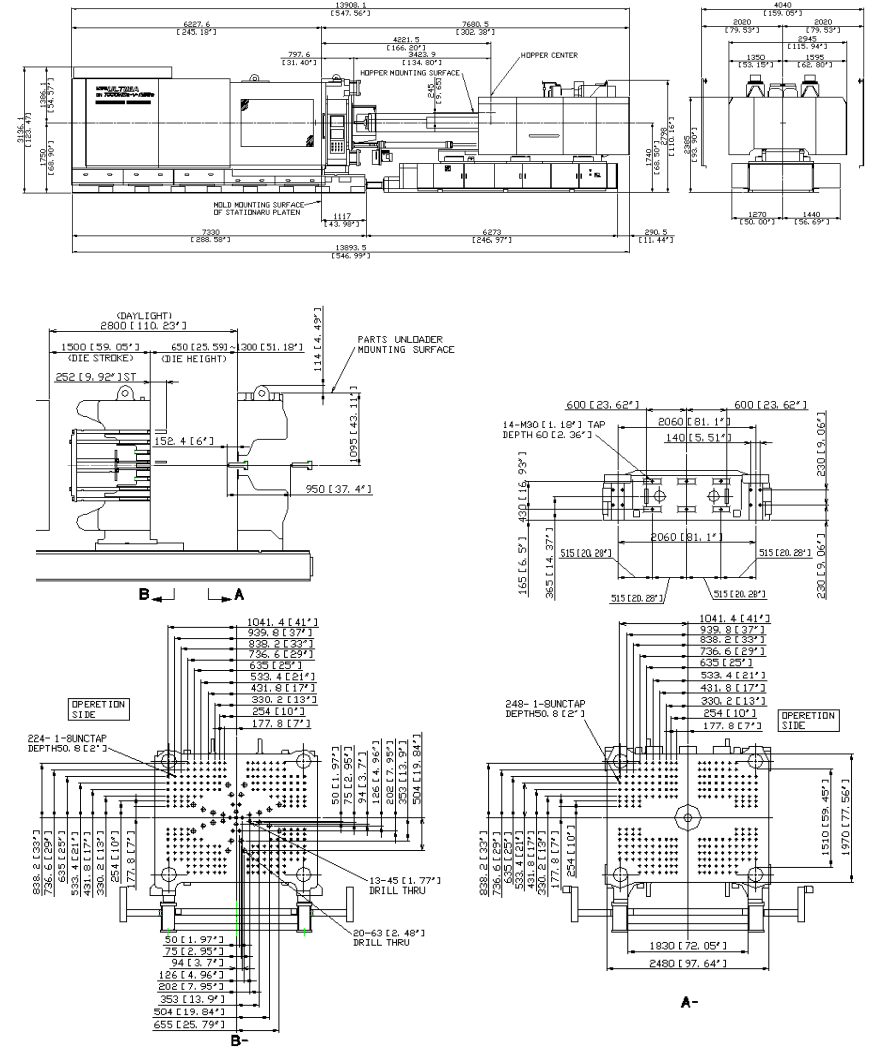
ITEM		UNIT	UN1550HW	
CLAMP UNIT	CLAMPING FORCE	kN (UStf)	13,720 (1,542)	
	CLEARANCE BETWEEN TIE BARS (HxV)	mm (inch)	1,830 × 1,510 (72.05 × 59.45)	
	PLATEN SIZE (HxV)	mm (inch)	2,480 × 1,970 (97.63 × 77.56)	
	CLAMP STROKE	mm (inch)	1,500 (59.06)	
	MOLD HEIGHT (MIN/MAX)	mm (inch)	650 / 1,300 (25.59 / 51.18)	
	MAX DAYLIGHT	mm (inch)	2,800 (110.23)	
	EJECTOR STROKE	mm (inch)	250 (9.84)	
	EJECTOR FORCE	kN (UStf)	294 (33.05)	
INJECTION UNIT	CAPACITY	T·m	<i>i128</i>	
	SCREW TYPE	—	A	B
	SCREW DIAMETER	mm (inch)	120 (4.72)	132 (5.20)
	THEORETICAL INJECTION VOLUME	cm ³ (cu.inch)	6,786 (414.11)	8,211 (501.07)
	INJ. SHOT MASS (PS)	g (oz)	6,243 (220.22)	7,554 (266.46)
	MAX INJECTION PRESSURE	MPa (psi)	185 (26,831)	150 (21,755)
	MAX HOLD PRESSURE	MPa (psi)	160 (23,206)	135 (19,580)
	INJECTION RATE	cm ³ /s (cu.inch/s)	1,493 (91.11)	1,807 (110.27)
	SCREW SPEED	min ⁻¹	130	
	PLASTICIZING CAPACITY (PS)	kg/h (lbs/h)	650 (1,433)	630 (1,389)

Remarks:

1. Injection weight, injection rate and plasticizing capacity are dependent upon molding conditions and resin used.
2. The value of plasticizing capacity is derived from UBE standard testing conditions.
3. Specifications and data in this brochure are for reference only. Actual specification/performance may vary due to numerous factors such as continuous performance improvements, manufacturing allowable tolerance variations, etc.
4. Please consult with us when using materials like PC, PMMA, POM, or PPO that require high screw torque for plasticizing.
5. Standard machine specifications are subject to change due to option.

UN1550HW-i128

MACHINE APPEARANCE



DIMENSION FOR MOLD