

UF720W-i55

SPEC TABLE

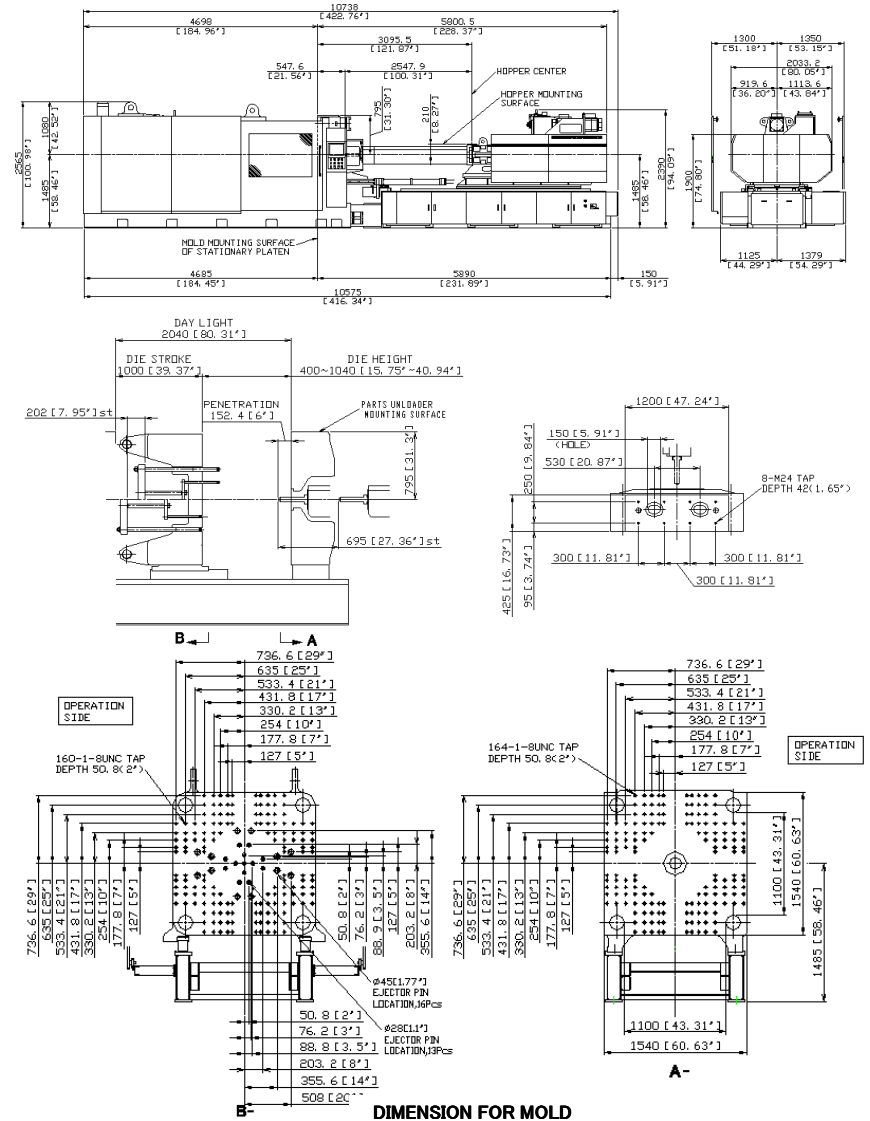
| ITEM | | UNIT | UF720W | |
|----------------|----------------------------------|--------------------------------|-------------------------------|----------------|
| CLAMP UNIT | CLAMPING FORCE | kN (UStf) | 6,370 (716) | |
| | CLEARANCE BETWEEN TIE BARS (HxV) | mm (inch) | 1,100 × 1,100 (43.31 × 43.31) | |
| | PLATEN SIZE (HxV) | mm (inch) | 1,540 × 1,540 (60.63 × 60.63) | |
| | CLAMP STROKE | mm (inch) | 1,000 (39.37) | |
| | MOLD HEIGHT (MIN/MAX) | mm (inch) | 400 / 1,040 (15.75 / 40.94) | |
| | MAX DAYLIGHT | mm (inch) | 2,040 (80.31) | |
| | EJECTOR STROKE | mm (inch) | 200 (7.87) | |
| | EJECTOR FORCE | kN (UStf) | 196 (22.03) | |
| INJECTION UNIT | CAPACITY | T·m | i55 | |
| | SCREW TYPE | — | A | B |
| | SCREW DIAMETER | mm (inch) | 90 (3.54) | 100 (3.93) |
| | THEORETICAL INJECTION VOLUME | cm ³ (cu.inch) | 2,863 (180.81) | 3,534 (215.66) |
| | INJ. SHOT MASS (PS) | g (oz) | 2,634 (92.91) | 3,252 (114.71) |
| | MAX INJECTION PRESSURE | MPa (psi) | 185 (26,832) | 150 (21,756) |
| | MAX HOLD PRESSURE | MPa (psi) | 167 (24,221) | 135 (19,580) |
| | INJECTION RATE | cm ³ /s (cu.inch/s) | 954 (58.22) | 982 (59.93) |
| | SCREW SPEED | min ⁻¹ | 165 | |
| | PLASTICIZING CAPACITY (PS) | kg/h (lbs/h) | 445 (981) | 462 (1,018) |

Remarks:

1. Injection weight, injection rate and plasticizing capacity are dependent upon molding conditions and resin used.
2. The value of plasticizing capacity is derived from UBE standard testing conditions.
3. Specifications and data in this brochure are for reference only. Actual specification/performance may vary due to numerous factors such as continuous performance improvements, manufacturing allowable tolerance variations, etc.
4. Please consult with us when using materials like PC, PMMA, POM, or PPO that require high screw torque for plasticizing.
5. Standard machine specifications are subject to change due to option.

UF720W-i55

MACHINE APPEARANCE



UF950W-i74

SPEC TABLE

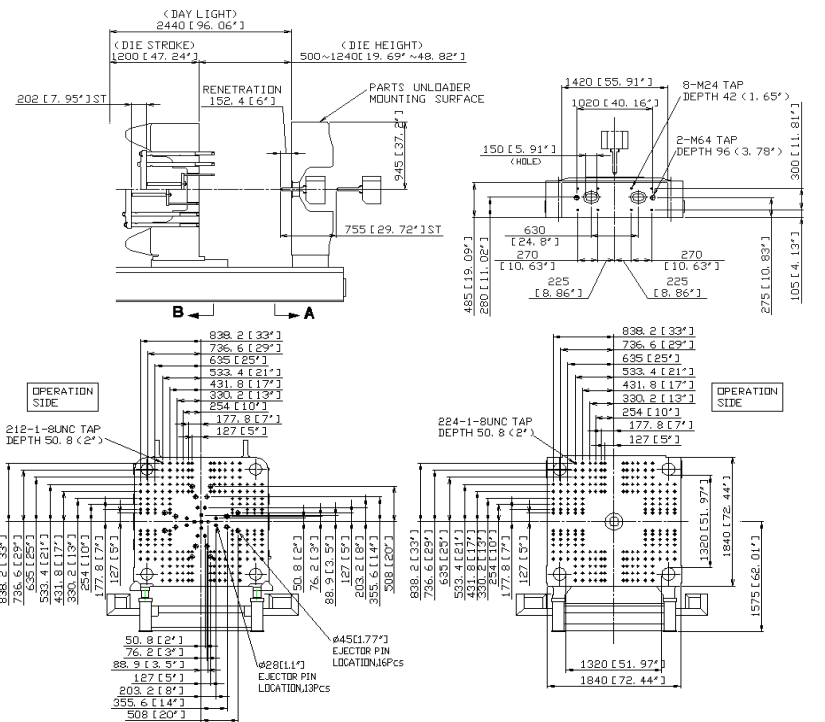
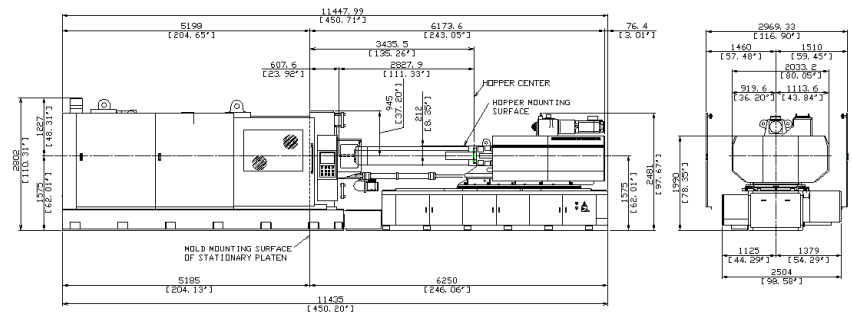
| ITEM | | UNIT | UF950W | |
|----------------|----------------------------------|--------------------------------|-------------------------------|----------------|
| CLAMP UNIT | CLAMPING FORCE | kN (UStf) | 8,330 (936) | |
| | CLEARANCE BETWEEN TIE BARS (HxV) | mm (inch) | 1,320 × 1,320 (51.97 × 51.97) | |
| | PLATEN SIZE (HxV) | mm (inch) | 1,840 × 1,840 (72.44 × 72.44) | |
| | CLAMP STROKE | mm (inch) | 1,200 (47.24) | |
| | MOLD HEIGHT (MIN/MAX) | mm (inch) | 500 / 1,240 (19.69 / 48.82) | |
| | MAX DAYLIGHT | mm (inch) | 2,440 (96.06) | |
| | EJECTOR STROKE | mm (inch) | 200 (7.87) | |
| | EJECTOR FORCE | kN (UStf) | 245 (27.5) | |
| INJECTION UNIT | CAPACITY | T·m | i74 | |
| | SCREW TYPE | — | A | B |
| | SCREW DIAMETER | mm (inch) | 100 (3.93) | 112 (4.41) |
| | THEORETICAL INJECTION VOLUME | cm ³ (cu.inch) | 3,927 (239.64) | 4,926 (300.60) |
| | INJ. SHOT MASS (PS) | g (oz) | 3,613 (127.44) | 4,532 (159.86) |
| | MAX INJECTION PRESSURE | MPa (psi) | 180 (26,107) | 150 (21,755) |
| | MAX HOLD PRESSURE | MPa (psi) | 162 (23,496) | 135 (19,580) |
| | INJECTION RATE | cm ³ /s (cu.inch/s) | 1,100 (67.13) | 1,182 (72.13) |
| | SCREW SPEED | min ⁻¹ | 147 | |
| | PLASTICIZING CAPACITY (PS) | kg/h (lbs/h) | 540 (1,190) | 560 (1,234) |

Remarks:

1. Injection weight, injection rate and plasticizing capacity are dependent upon molding conditions and resin used.
2. The value of plasticizing capacity is derived from UBE standard testing conditions.
3. Specifications and data in this brochure are for reference only. Actual specification/performance may vary due to numerous factors such as continuous performance improvements, manufacturing allowable tolerance variations, etc.
4. Please consult with us when using materials like PC, PMMA, POM, or PPO that require high screw torque for plasticizing.
5. Standard machine specifications are subject to change due to option.

UF950W-i74

MACHINE APPEARANCE



DIMENSION FOR MOLD

UF1550HW-i128

SPEC TABLE

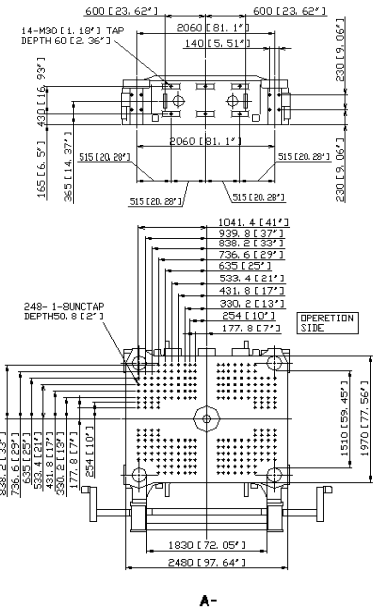
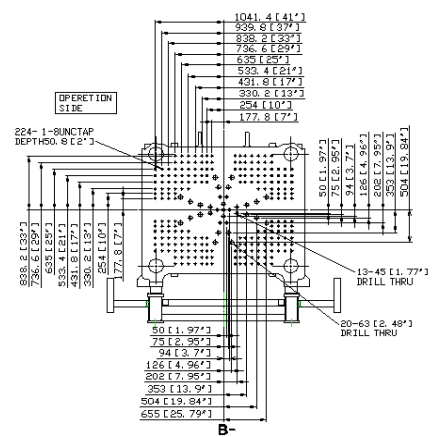
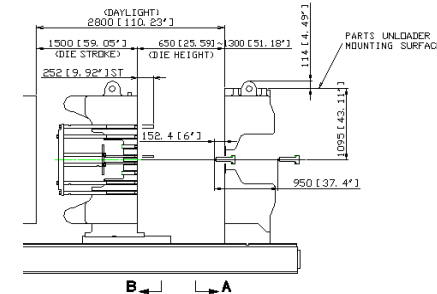
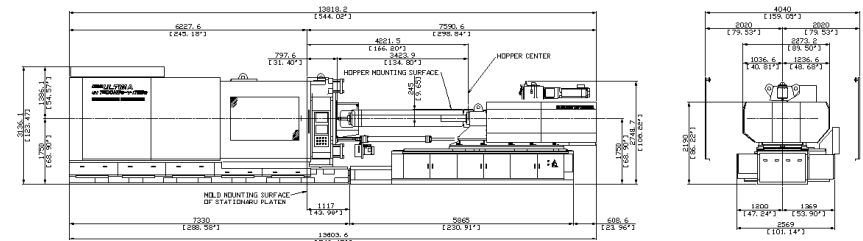
| ITEM | | UNIT | UF1550HW | |
|----------------|----------------------------------|--------------------------------|-------------------------------|----------------|
| CLAMP UNIT | CLAMPING FORCE | kN (UStf) | 13,720 (1,542) | |
| | CLEARANCE BETWEEN TIE BARS (HxV) | mm (inch) | 1,830 × 1,510 (72.05 × 59.45) | |
| | PLATEN SIZE (HxV) | mm (inch) | 2,480 × 1,970 (97.63 × 77.56) | |
| | CLAMP STROKE | mm (inch) | 1,500 (59.06) | |
| | MOLD HEIGHT (MIN/MAX) | mm (inch) | 650 / 1,300 (25.59 / 51.18) | |
| | MAX DAYLIGHT | mm (inch) | 2,800 (110.23) | |
| | EJECTOR STROKE | mm (inch) | 250 (9.84) | |
| EJECTOR FORCE | | kN (UStf) | 294 (33.05) | |
| | | | | |
| INJECTION UNIT | CAPACITY | T·m | <i>i128</i> | |
| | SCREW TYPE | — | A | B |
| | SCREW DIAMETER | mm (inch) | 120 (4.72) | 132 (5.20) |
| | THEORETICAL INJECTION VOLUME | cm ³ (cu.inch) | 6,786 (414.11) | 8,211 (501.07) |
| | INJ. SHOT MASS (PS) | g (oz) | 6,243 (220.22) | 7,554 (266.46) |
| | MAX INJECTION PRESSURE | MPa (psi) | 180 (26.11) | 150 (21,755) |
| | MAX HOLD PRESSURE | MPa (psi) | 162 (23.50) | 135 (19,580) |
| | INJECTION RATE | cm ³ /s (cu.inch/s) | 1,493 (91.11) | 1,505 (91.84) |
| | SCREW SPEED | min ⁻¹ | 130 | |
| | PLASTICIZING CAPACITY (PS) | kg/h (lbs/h) | 650 (1,433) | 630 (1,389) |

Remarks:

1. Injection weight, injection rate and plasticizing capacity are dependent upon molding conditions and resin used.
2. The value of plasticizing capacity is derived from UBE standard testing conditions.
3. Specifications and data in this brochure are for reference only. Actual specification/performance may vary due to numerous factors such as continuous performance improvements, manufacturing allowable tolerance variations, etc.
4. Please consult with us when using materials like PC, PMMA, POM, or PPO that require high screw torque for plasticizing.
5. Standard machine specifications are subject to change due to option.

UF1550HW-i128

MACHINE APPEARANCE



DIMENSION FOR MOLD