

# 1200MMXW-240oz

## SPEC TABLE

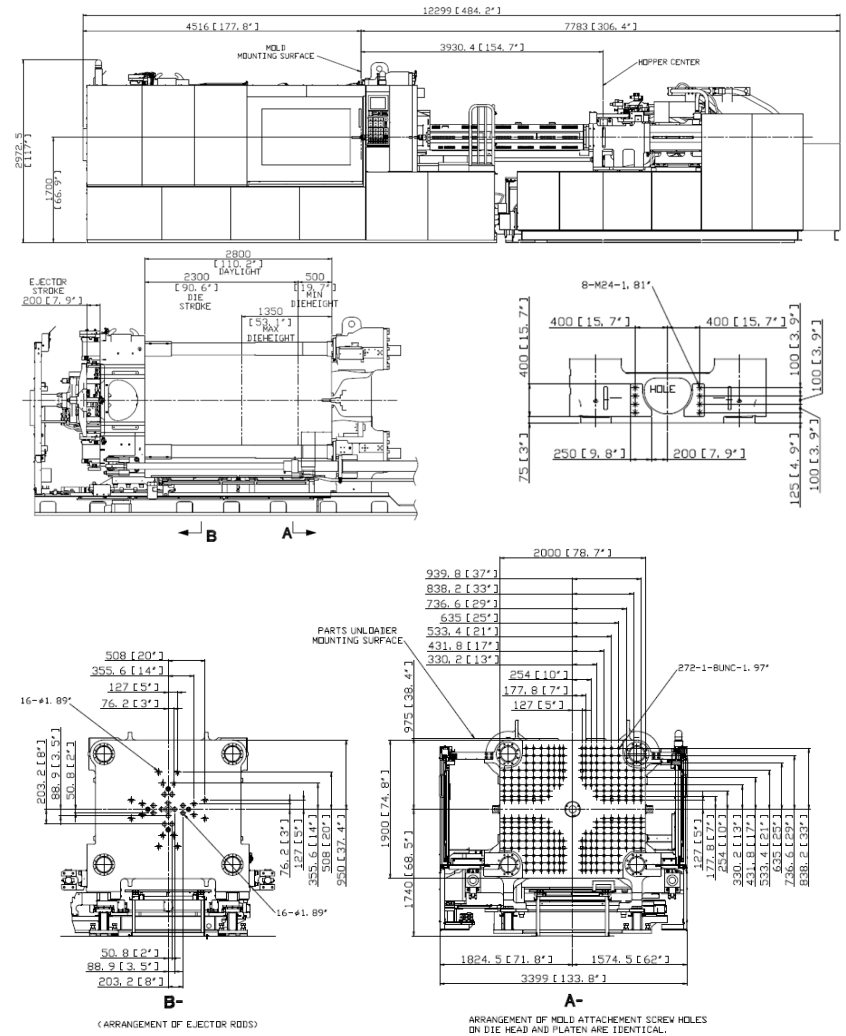
ITEM		UNIT	1200MMX-W	
CLAMP UNIT	CLAMPING FORCE	kN (UStf)	10,290 (1157)	
	MOLD CLOSING SPEED	HIGH	750 (29.5)	
		LOW	33 (1.30)	
	MOLD OPENING SPEED	DETACHING	17 (0.67)	
		HIGH	750 (29.5)	
		LOW	33 (1.30)	
	PLATEN SIZE (HxV)	mm (inch)	2,000 × 1,900 (78.74 × 74.80)	
	CLEARANCE BETWEEN TIE BARS (HxV)	mm (inch)	1,550 × 1,300 (61.02 × 51.18)	
	MAX CLAMP STROKE	mm (inch)	2,300 (90.55)	
	MAX DAYLIGHT	mm (inch)	2,800 (110.23)	
MOLD HEIGHT (MIN/MAX)	mm (inch)	500 / 1,350 (19.69 / 53.15)		
EJECTOR	FORCE	kN (US tf)	196 (22.04)	
	STROKE	mm (inch)	200 (7.87)	
	FORWARD SPEED	mm/s (inch/s)	97 (3.82)	
	RETRACT SPEED	mm/s (inch/s)	133 (5.24)	
INJECTION UNIT	INJECTION TYPE	-	<b>240oz</b>	
	THEORETICAL INJECTION VOLUME	cm <sup>3</sup> (cu.inch)	6,780 (414)	
	INJ. SHOT MASS (PS)	g (oz)	6,240 (220.2)	
	PLASTICIZING CAPACITY (PS)	kg/hr (lbs/hr)	655 (1,444)	
	MAX INJECTION PRESSURE	MPa (psi)	176 (25,596)	
	INJECTION SPEED	mm/s (inch/s)	97 (3.82)	
	INJECTION RATE	cm <sup>3</sup> /s (cu.in./s)	1.095 (67)	
	INJECTION POWER	HP (PS)	260 (264)	
	SCREW DIAMETER	mm (inch)	120 (4.72)	
	SCREW STROKE	mm (inch)	600 (23.62)	
	SCREW SPEED	HIGH SPEED		168
		MID SPEED	min <sup>-1</sup>	112
		LOW SPEED		84

### Remarks:

1. Injection weight, injection rate and plasticizing capacity are dependent upon molding conditions and resin used.
2. The value of plasticizing capacity is derived from UBE standard testing conditions.
3. Specifications and data in this brochure are for reference only. Actual specification/performance may vary due to numerous factors such as continuous performance improvements, manufacturing allowable tolerance variations, etc.
4. Please consult with us when using materials like PC, PMMA, POM, or PPO that require high screw torque for plasticizing.
5. Standard machine specifications are subject to change due to option.

# 1200MMXW-240oz

## MACHINE APPEARANCE



### DIMENSION FOR MOLD

# 1500MMXW-340/470oz

## SPEC TABLE

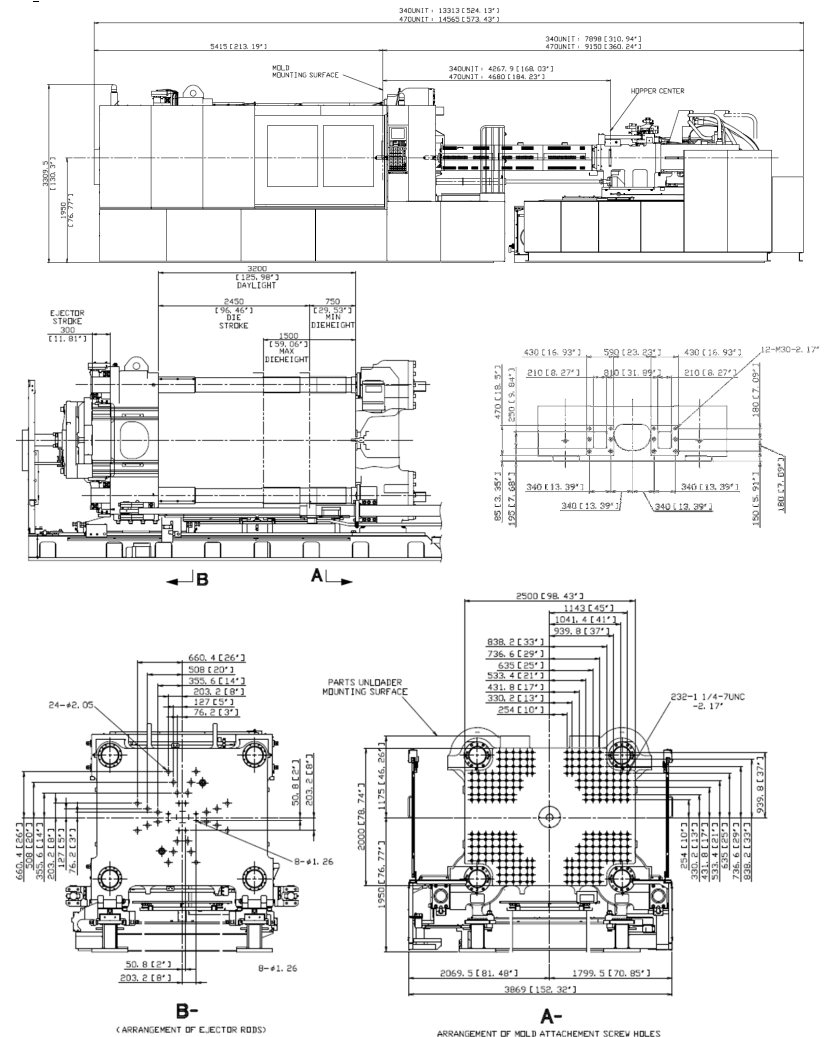
ITEM		UNIT	1500MMX-W		
CLAMP UNIT	CLAMPING FORCE	kN (UStf)	13.230 (1487)		
	MOLD CLOSING SPEED	HIGH	750 (29.5)		
		LOW	33 (1.30)		
	MOLD OPENING SPEED	DETACHING	17 (0.67)		
		HIGH	750 (29.5)		
		LOW	33 (1.30)		
	PLATEN SIZE (HxV)	mm (inch)	2,500 × 2,000 (98.42 × 78.74)		
	CLEARANCE BETWEEN TIE BARS (HxV)	mm (inch)	1,850 × 1,520 (72.83 × 59.84)		
	MAX CLAMP STROKE	mm (inch)	2,450 (96.45)		
	MAX DAYLIGHT	mm (inch)	3,200 (125.98)		
MOLD HEIGHT (MIN/MAX)	mm (inch)	750 / 1,500 (29.53 / 59.05)			
EJECTOR	FORCE	kN (US tf)	294 (33.06)		
	STROKE	mm (inch)	300 (11.81)		
	FORWARD SPEED	mm/s (inch/s)	97 (3.82)		
	RETRACT SPEED	mm/s (inch/s)	133 (5.24)		
INJECTION UNIT	INJECTION TYPE	-	<b>340oz</b>	<b>470oz</b>	
	THEORETICAL INJECTION VOLUME	cm <sup>3</sup> (cu.inch)	9,660 (589.6)	13,200 (808.7)	
	INJ. SHOT MASS (PS)	g (oz)	8,890 (313.5)	12,100 (426.8)	
	PLASTICIZING CAPACITY (PS)	kg/hr (lbs/hr)	700 (1,543)	750 (1,653)	
	MAX INJECTION PRESSURE	MPa (psi)	176 (25,596)	176 (25,596)	
	INJECTION SPEED	mm/s (inch/s)	88 (3.46)	76 (3.01)	
	INJECTION RATE	cm <sup>3</sup> /s (cu.in <sup>3</sup> /s)	1,260 (76.98)	1,350 (82.46)	
	INJECTION POWER	HP (PS)	299 (303)	320 (324)	
	SCREW DIAMETER	mm (inch)	135 (5.32)	150 (5.91)	
	SCREW STROKE	mm (inch)	675 (26.57)	750 (29.53)	
	SCREW SPEED	HIGH SPEED		112	110
		MID SPEED	min <sup>-1</sup>	89	73
		LOW SPEED		61	55

### Remarks:

1. Injection weight, injection rate and plasticizing capacity are dependent upon molding conditions and resin used.
2. The value of plasticizing capacity is derived from UBE standard testing conditions.
3. Specifications and data in this brochure are for reference only. A actual specification/performance may vary due to numerous factors such as continuous performance improvements, manufacturing allowable tolerance variations, etc.
4. Please consult with us when using materials like PC, PMMA, POM, or PPO that require high screw torque for plasticizing.
5. Standard machine specifications are subject to change due to option.

# 1500MMXW-340/470oz

## MACHINE APPEARANCE



### DIMENSION FOR MOLD

# 1800MMX-340/470oz

## SPEC TABLE

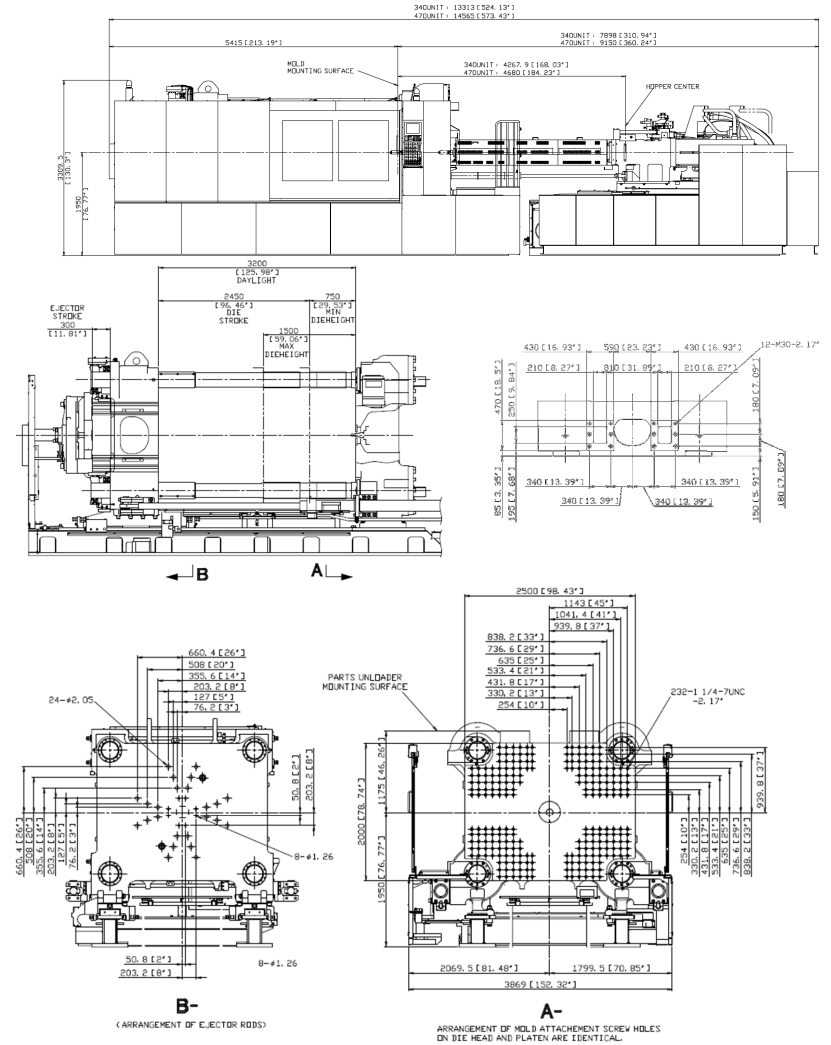
ITEM		UNIT	1800MMX		
CLAMP UNIT	CLAMPING FORCE	kN (UStf)	15,680 (1763)		
	MOLD CLOSING SPEED	HIGH	750 (29.5)		
		LOW	33 (1.30)		
	MOLD OPENING SPEED	DETACHING	17 (0.67)		
		HIGH	750 (29.5)		
		LOW	33 (1.30)		
	PLATEN SIZE (HxV)	mm (inch)	2,500 × 2,000 (98.42 × 78.74)		
	CLEARANCE BETWEEN TIE BARS (HxV)	mm (inch)	1,850 × 1,520 (72.83 × 59.84)		
	MAX CLAMP STROKE	mm (inch)	2,450 (96.45)		
	MAX DAYLIGHT	mm (inch)	3,200 (125.98)		
MOLD HEIGHT (MIN/MAX)	mm (inch)	750 / 1,500 (29.53 / 59.05)			
EJECTOR	FORCE	kN (US tf)	294 (33.06)		
	STROKE	mm (inch)	300 (11.81)		
	FORWARD SPEED	mm/s (inch/s)	97 (3.82)		
	RETRACT SPEED	mm/s (inch/s)	133 (5.24)		
INJECTION UNIT	INJECTION TYPE	-	<b>340oz</b>	<b>470oz</b>	
	THEORETICAL INJECTION VOLUME	cm <sup>3</sup> (cu.inch)	9,660 (589.6)	13,200 (808.7)	
	INJ. SHOT MASS (PS)	g (oz)	8,890 (313.5)	12,100 (426.8)	
	PLASTICIZING CAPACITY (PS)	kg/hr (lbs/hr)	700 (1,543)	750 (1,653)	
	MAX INJECTION PRESSURE	MPa (psi)	176 (25,596)	176 (25,596)	
	INJECTION SPEED	mm/s (inch/s)	88 (3.46)	76 (3.01)	
	INJECTION RATE	cm <sup>3</sup> /s (cu.in <sup>3</sup> /s)	1,260 (76.98)	1,350 (82.46)	
	INJECTION POWER	HP (PS)	299 (303)	320 (324)	
	SCREW DIAMETER	mm (inch)	135 (5.32)	150 (5.91)	
	SCREW STROKE	mm (inch)	675 (26.57)	750 (29.53)	
	SCREW SPEED	HIGH SPEED		112	110
		MID SPEED	min <sup>-1</sup>	89	73
		LOW SPEED		61	55

### Remarks:

1. Injection weight, injection rate and plasticizing capacity are dependent upon molding conditions and resin used.
2. The value of plasticizing capacity is derived from UBE standard testing conditions.
3. Specifications and data in this brochure are for reference only. A actual specification/performance may vary due to numerous factors such as continuous performance improvements, manufacturing allowable tolerance variations, etc.
4. Please consult with us when using materials like PC, PMMA, POM, or PPO that require high screw torque for plasticizing.
5. Standard machine specifications are subject to change due to option.

# 1800MMX-340/470z

## MACHINE APPEARANCE



### DIMENSION FOR MOLD

# 2200MMX-340/470oz

## SPEC TABLE

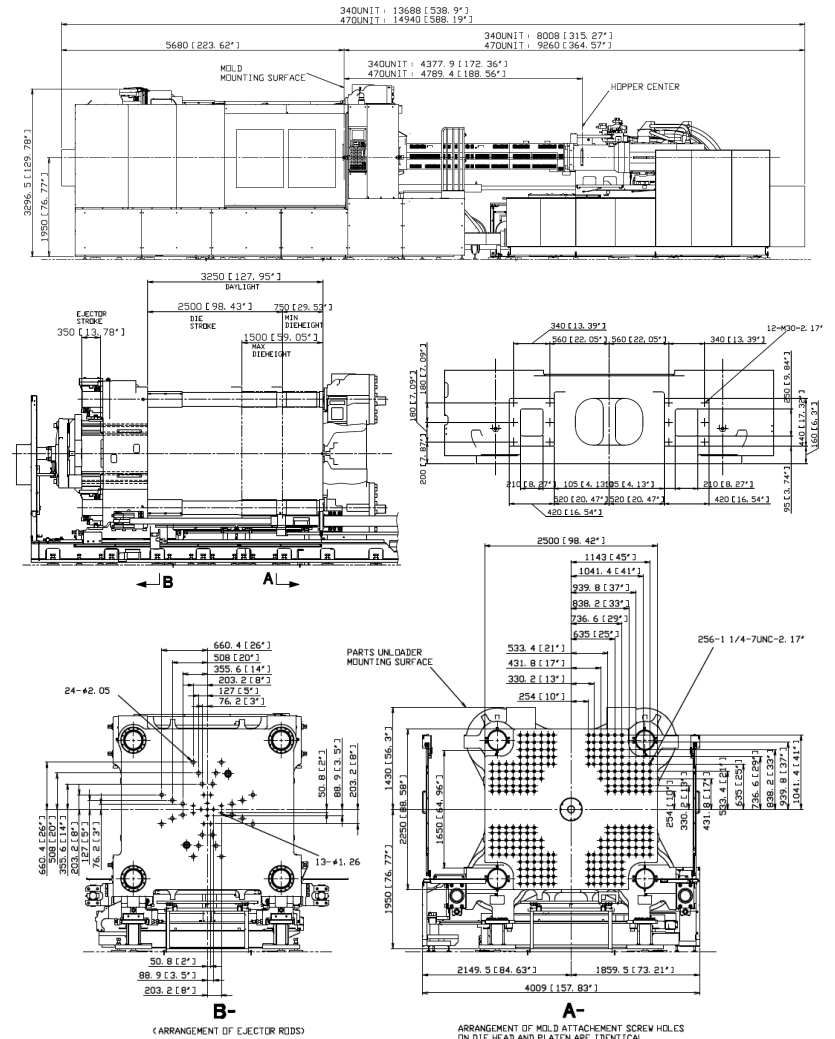
ITEM		UNIT	2200MMX		
CLAMP UNIT	CLAMPING FORCE	kN (UStf)	19,608 (2,204)		
	MOLD CLOSING SPEED	HIGH	750 (29.5)		
		LOW	33 (1.30)		
	MOLD OPENING SPEED	DETACHING	17 (0.67)		
		HIGH	750 (29.5)		
		LOW	33 (1.30)		
	PLATEN SIZE (HxV)	mm (inch)	2,500 × 2,250 (98.42 × 88.58)		
	CLEARANCE BETWEEN TIE BARS (HxV)	mm (inch)	1,850 × 1,650 (72.83 × 64.96)		
	MAX CLAMP STROKE	mm (inch)	2,500 (98.42)		
	MAX DAYLIGHT	mm (inch)	3,250 (127.95)		
MOLD HEIGHT (MIN/MAX)	mm (inch)	750 / 1,500 (29.53 / 59.05)			
EJECTOR	FORCE	kN (US tf)	392 (44.08)		
	STROKE	mm (inch)	350 (13.77)		
	FORWARD SPEED	mm/s (inch/s)	77 (3.03)		
	RETRACT SPEED	mm/s (inch/s)	133 (5.24)		
INJECTION UNIT	INJECTION TYPE	-	<b>340oz</b>	<b>470oz</b>	
	THEORETICAL INJECTION VOLUME	cm <sup>3</sup> (cu.inch)	9,660 (589.6)	13,200 (808.7)	
	INJ. SHOT MASS (PS)	g (oz)	8,890 (313.5)	12,100 (426.8)	
	PLASTICIZING CAPACITY (PS)	kg/hr (lbs/hr)	700 (1,543)	750 (1,653)	
	MAX INJECTION PRESSURE	MPa (psi)	176 (25,596)	176 (25,596)	
	INJECTION SPEED	mm/s (inch/s)	88 (3.46)	76 (3.01)	
	INJECTION RATE	cm <sup>3</sup> /s (cu.in <sup>3</sup> /s)	1,260 (76.98)	1,350 (82.46)	
	INJECTION POWER	HP (PS)	299 (303)	320 (324)	
	SCREW DIAMETER	mm (inch)	135 (5.32)	150 (5.91)	
	SCREW STROKE	mm (inch)	675 (26.57)	750 (29.53)	
	SCREW SPEED	HIGH SPEED	min <sup>-1</sup>	112	110
		MID SPEED		89	73
		LOW SPEED		61	55

### Remarks:

1. Injection weight, injection rate and plasticizing capacity are dependent upon molding conditions and resin used.
2. The value of plasticizing capacity is derived from UBE standard testing conditions.
3. Specifications and data in this brochure are for reference only. Actual specification/performance may vary due to numerous factors such as continuous performance improvements, manufacturing allowable tolerance variations, etc.
4. Please consult with us when using materials like PC, PMMA, POM, or PPO that require high screw torque for plasticizing.
5. Standard machine specifications are subject to change due to option.

# 2200MMX-340/470oz

## MACHINE APPEARANCE



## DIMENSION FOR MOLD